



J & P Richardson Industries

Industrial Services



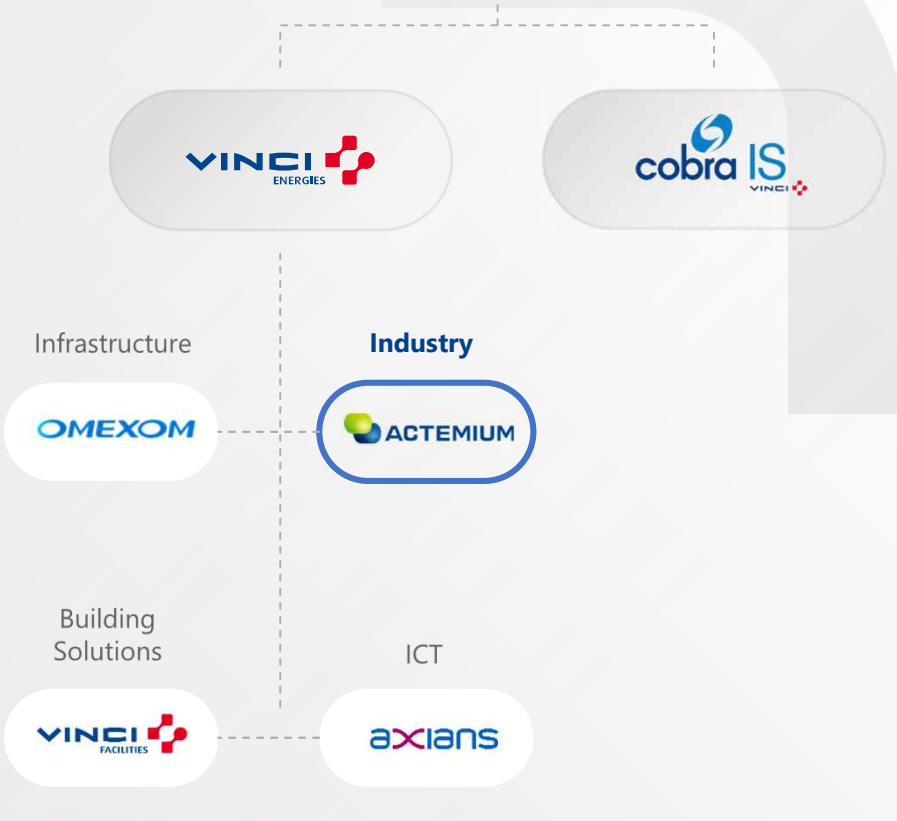


Part of VINCI Energies

Concessions

- VINCI Autoroutes
- VINCI Airports
- VINCI Stadium
- Other concessions

Energy



Construction

- VINCI CONSTRUCTION
- Specialty Networks Division
- Major Projects Division
- Europe & Africa Division
- United Kingdom Division
- Americas & Oceania Division
- Road Division France
- Building Division France
- Civil Engineering Division France
- Networks Division France

Business Units

Five Business Units of JPR



**Industrial
Services**

**Water
Infrastructure**

Manufacturing

**Overhead
Distribution**

**Power &
Mobility**

- Airports
- Energy
- Food and Beverage
- Manufacturing
- Mines and Quarries

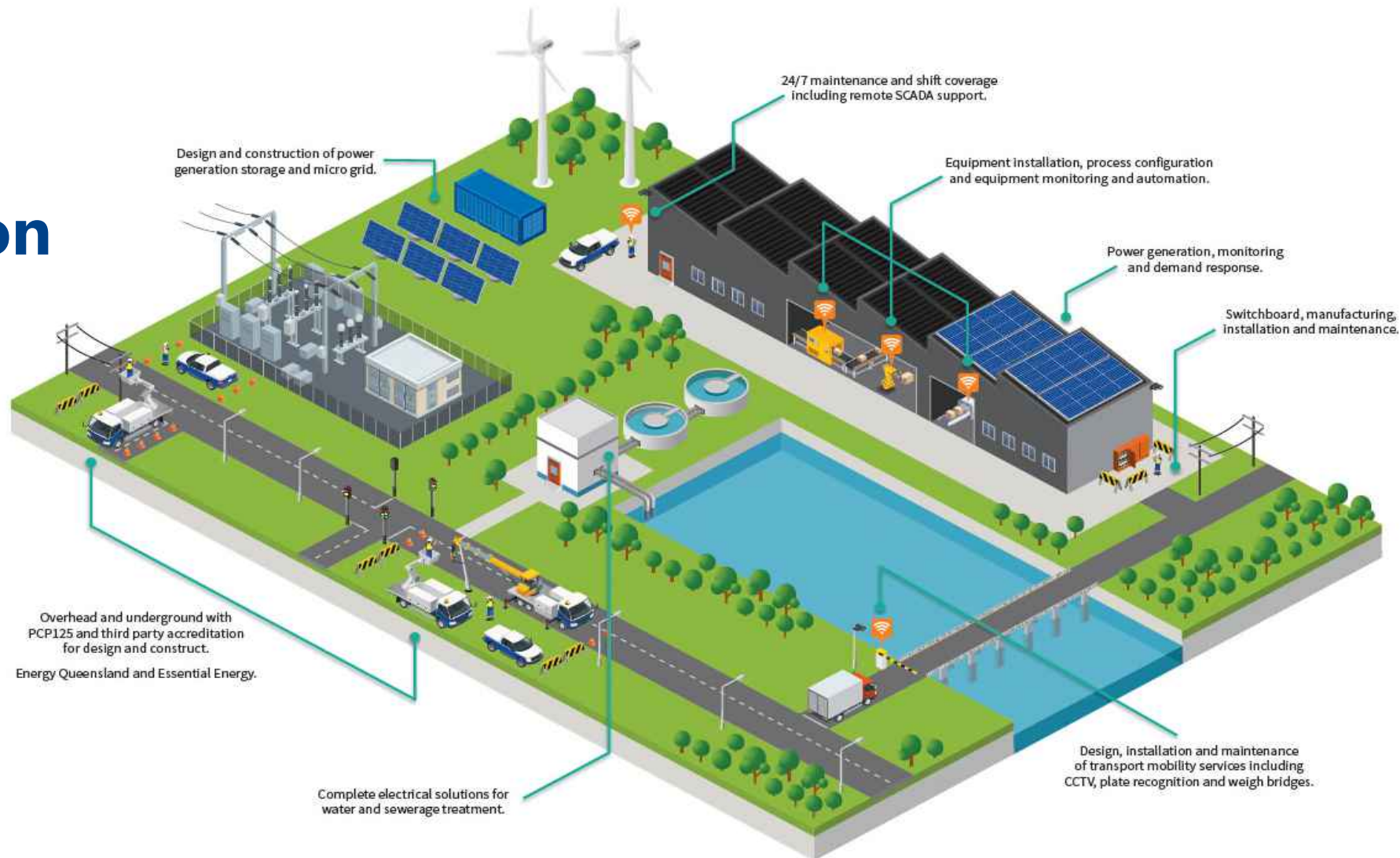
- Water
- Environment
- Territories

- Food and Beverage
- Mines
- Water

- Power: Distribution

- Power: Distribution
- Territories
- Roads and Motorways

Complete Solution



Vision & missions

Accelerating your industrial performance for a better world

100% dedicated to the industrial process improvement, The Actemium network enables a customized approach, presenting multi-technical, multi-site and multi-country solutions.

Operating throughout the entire industrial life cycle, from design up to and including maintenance.



A powerful worldwide network

40 Countries
400 Business units

23,000 Employees

3.2€ BN



Value creation through market segmentation



Safety, health & environment above all else

The prerequisites of all actions at the heart of any project.



Our action is built around **three** priorities:

- **cutting CO₂ emissions by 40%** by 2030,
- **reducing our water consumption, protecting biodiversity,**
- **promoting waste recycling** via the circular economy.

WORKING FOR THE ENVIRONMENT



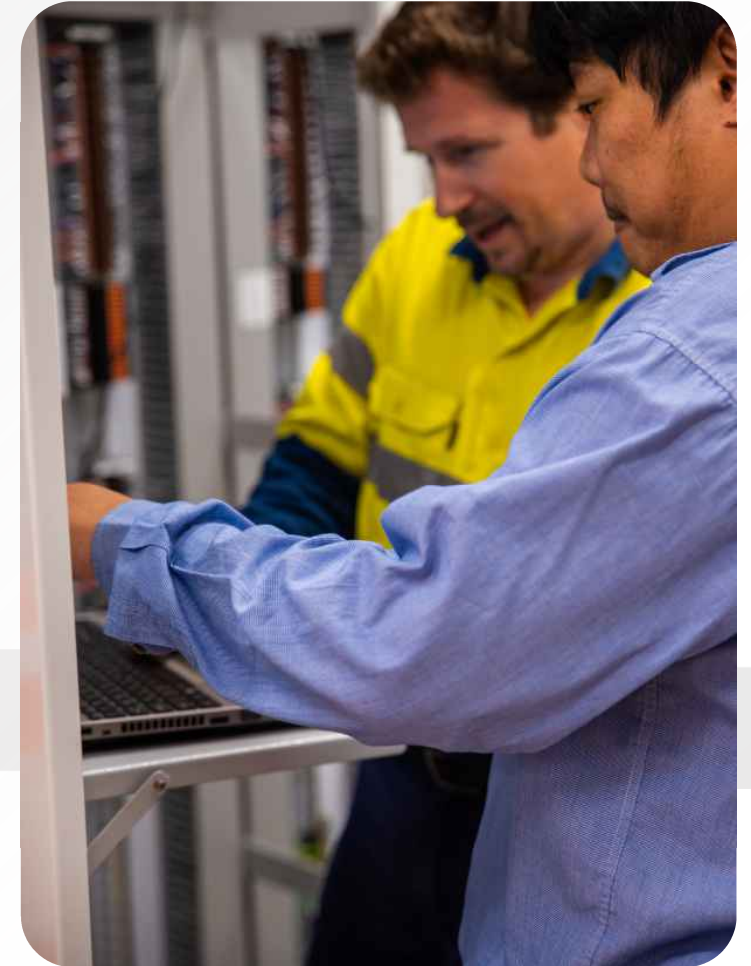
We want to help our clients reduce their CO₂ emissions through **our range of energy efficiency, energy audit and renewable energy solutions**, by transforming construction, operation and production methods.



Industrial Services

Our Mission

Our mission is to partner with businesses to identify, implement and improve the performance of their electrical assets which are critical to the continuity and reliable operation of their business



Our Segments

JPR Industrial Services has extensive experience in delivering solutions for the Air, Energy, Food and Beverage, Manufacturing and the Mines and Quarries Segments.



Complete life cycle of industry



Advise

Customer-centric consultancy.



Design

engineering from specific equipment to global solutions.



Built

Implementation of specific solutions as well as complex multi-site projects.

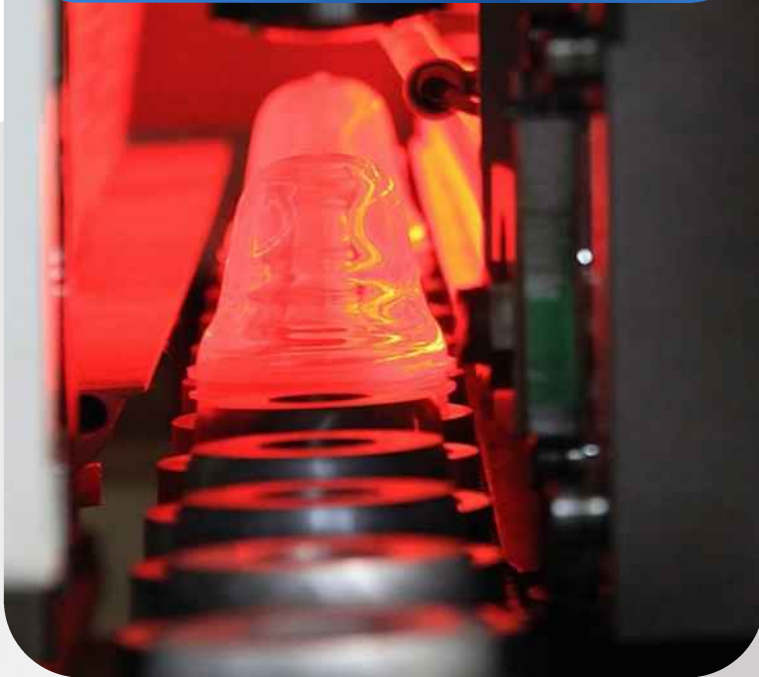


Maintain

Long-term commitment towards multi-technical maintenance & operations.

Areas of expertise

Electrical & Thermal



Controls &
Industrial IT



Mechanical



Our Technologies

PLCs

- AllenBradley – SLC500, ControlLogix, CompactLogix
- Siemens – S7-200, S7-300, S7-400, S7-1200, S7-1500
- Schneider – Premium, M340, M580
- Omron
- GE
- Mitsubishi

SCADA and HMI

- CitectSCADA
- FactoryTalk – Site Edition & Machine Edition
- Siemens – WinCC
- Aveva – System Platform
- Ignition SCADA
- Wonderware

Drives

- Siemens – SIMOTION, SIMOCODE & SINAMICS
- AllenBradley – PowerFlex & SMC Flex
- Schneider – Altivar & TesysT
- Danfoss
- SEW

Mines and Quarries

What we offer

- Design and Construction of electrical and control systems for plant upgrades and new facilities
- Asset monitoring and remote access engineering support
- Electrical specialties such as HV, Hazardous Areas Instrumentation and Data

Customers

- Boral
- Cape Flattery Silica Mine
- Holcim
- Mount Marrow Blue Metal
- New Hope Coal



Mines and Quarries

Commodity Expertise

- Silica & Mineral Sands
- Coal
- Aggregate & Construction Materials
- Copper

Process Expertise

- Reclaiming
- Crushing & Screening
- Conveying & Stockpiling
- Processing & Batching
- Processing & Batching
- Out Loading & Ship Loading

Delivery Expertise

- Power
- Drives
- Control & Automation
- Installation
- Maintenance

In a nutshell

Actemium, a global integrator
in industry

Through




- ↯ **A strong local presence with a global connection**
- ↯ **Deep knowledge based on high level expertise**
- ↯ **Focus on trust & long-term partnerships**
- ↯ **Industry is key to building a sustainable world.**



PROJECT REFERENCES

Ship Loader Design and Installation

 Mines and Quarries

 1.7m AUD

 2018

 2 years




PROJECT DETAILS



JPR was responsible for the procurement of all electrical equipment for the ship loader and its shipping to Japan for installation by the Japanese machine builder. JPR also managed quality assurance throughout the project, the no load testing and the commissioning of the ship loader in Japan prior to its shipping to site. Once on site, JPR will manage the final assembly and commissioning of machine and site performance testing of the completed system.



Thermography Inspections

 Mines and Quarries

 Various

 2023

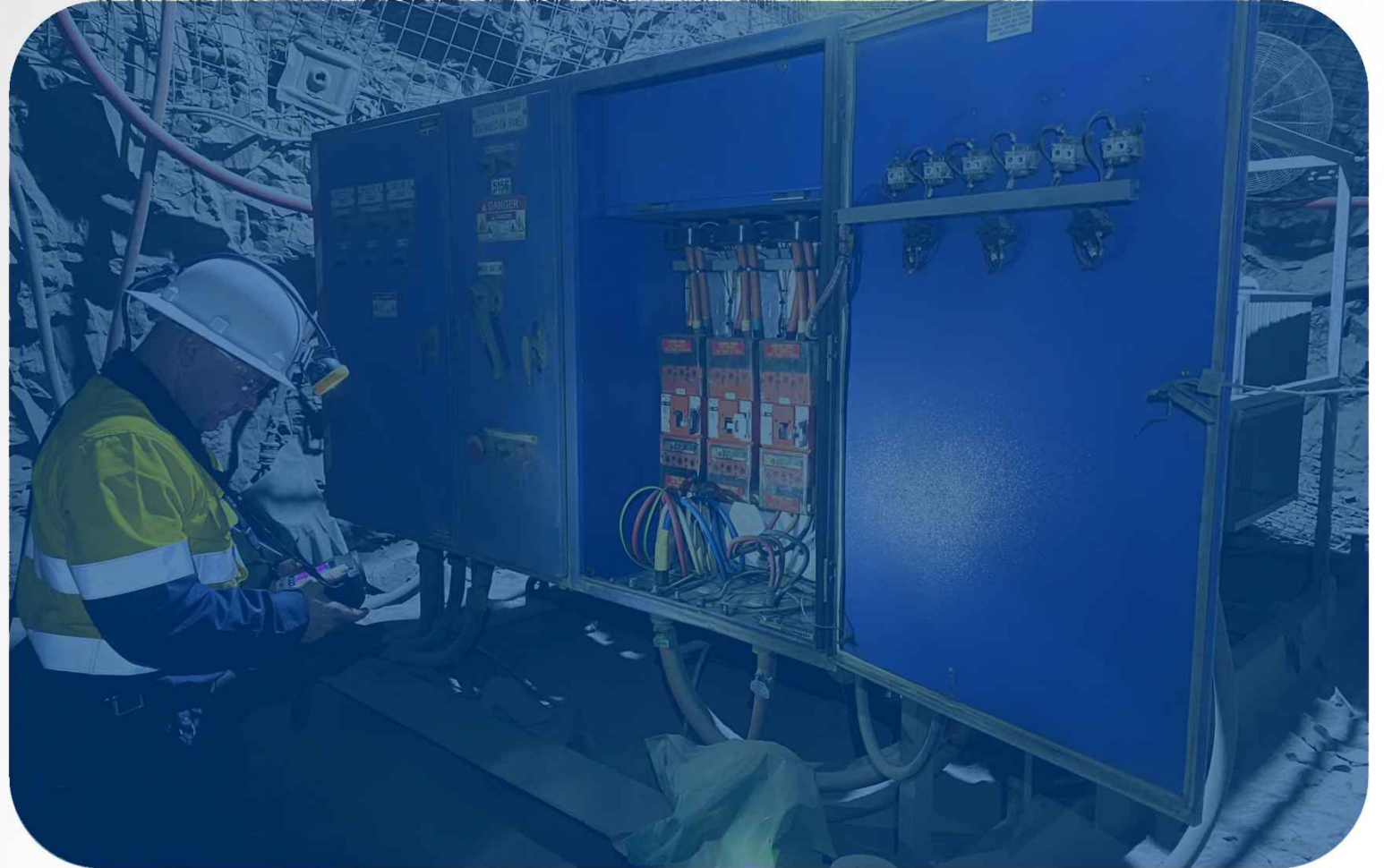
 1 week

PROJECT DETAILS 




JPR completed a site wide Thermography Inspection at the Eloise Copper Mine in May 2023. a recommendation and defect report was provided as part of JPR's scope.

JPR also perform ongoing engineering support for the mining operations on a regular basis remotely and onsite.



Pug Mill Upgrade

 Mines and Quarries

 600K AUD

 2022

 6 months



PROJECT DETAILS


JPR designed, manufactured and installed new Motor Control Centre switchboard and field electrical infrastructure for the Pug Mill replacement for Barro Group Mount Marrow Blue Metal Quarries.

Additionally, JPR designed, programmed and commissioned the control and SCADA system for the plant including a batching management system.

CCTV was also installed and commissioning by JPR.



Dune 4 Slurry Pump Station

 Mines and Quarries

 1.8m AUD

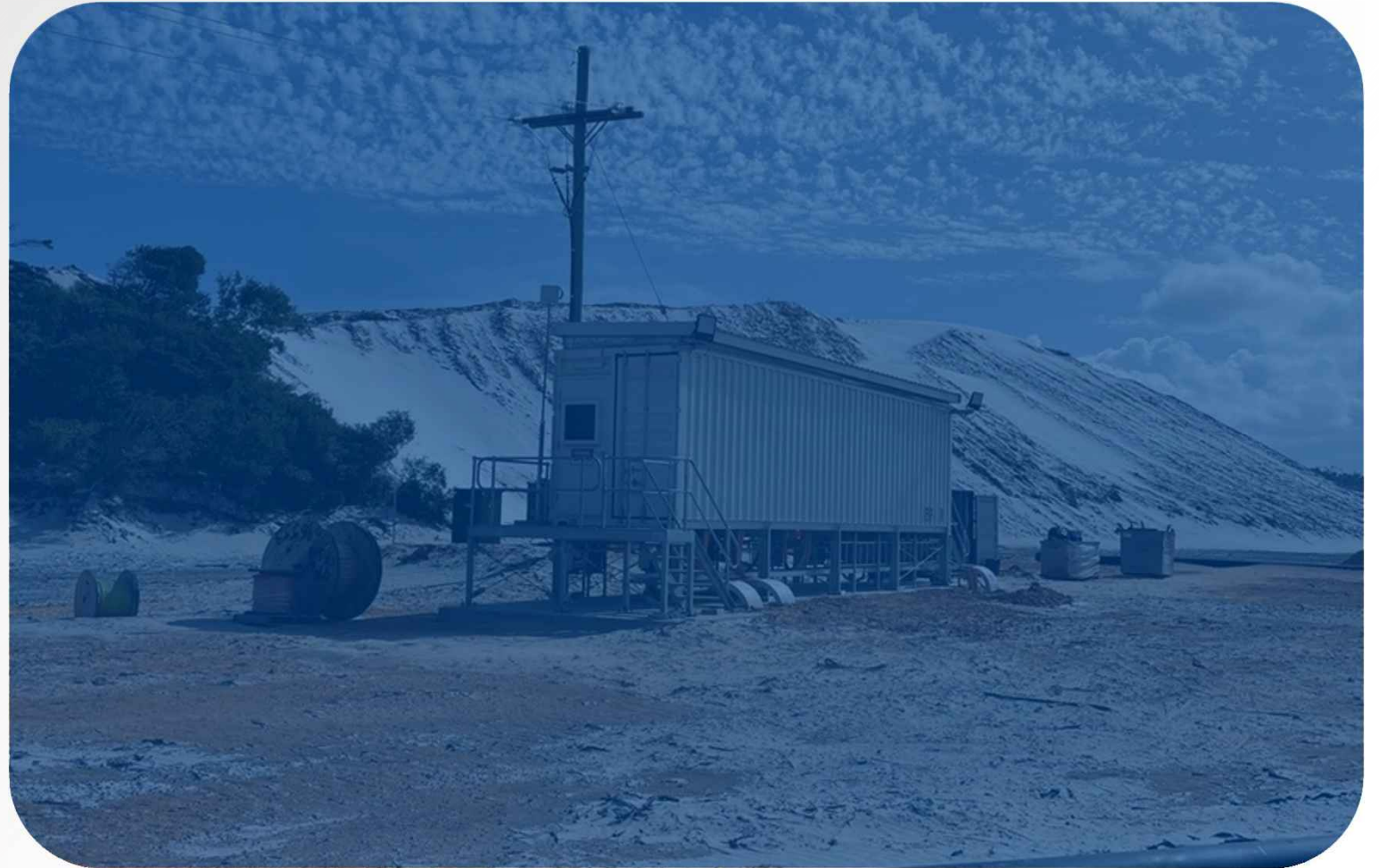
 2020

 6 months



PROJECT DETAILS 

JPR was engaged to supply and install a pump station containerized switchroom including the mining motors for the slurry pump station and trommel feed conveyor. Additional works included the overhead reticulation of 1km high voltage to the location for supply and installation of transformer and earth grid.



Contact

Stephen Harris

Project Manager

stephen.harris@jpr.com.au

+61 428 754 304

